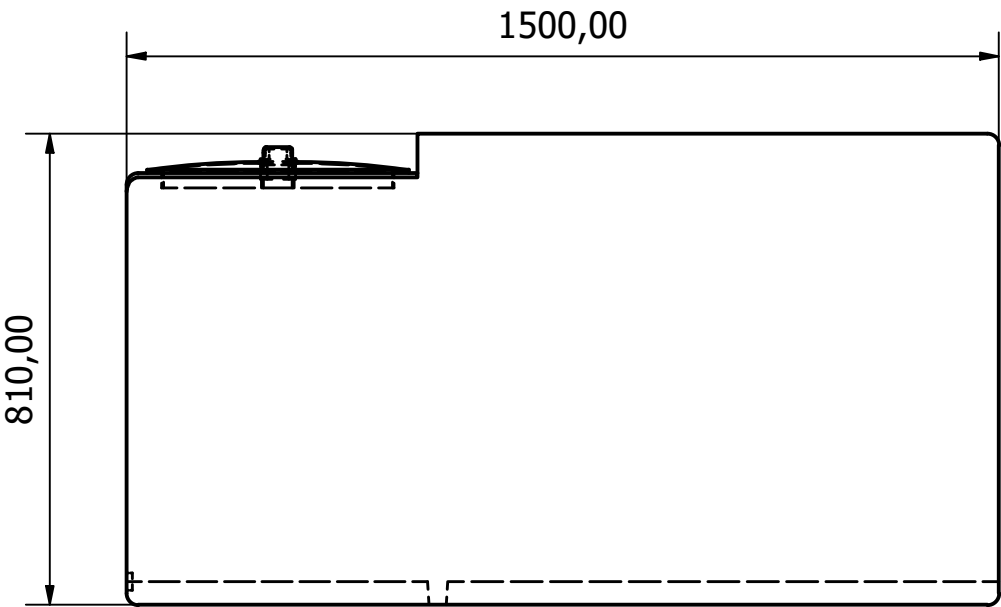
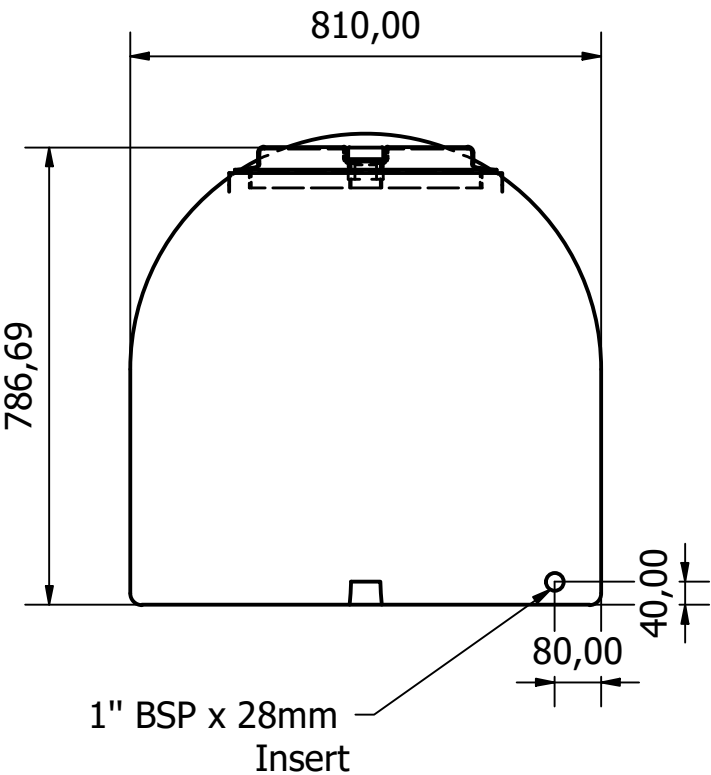
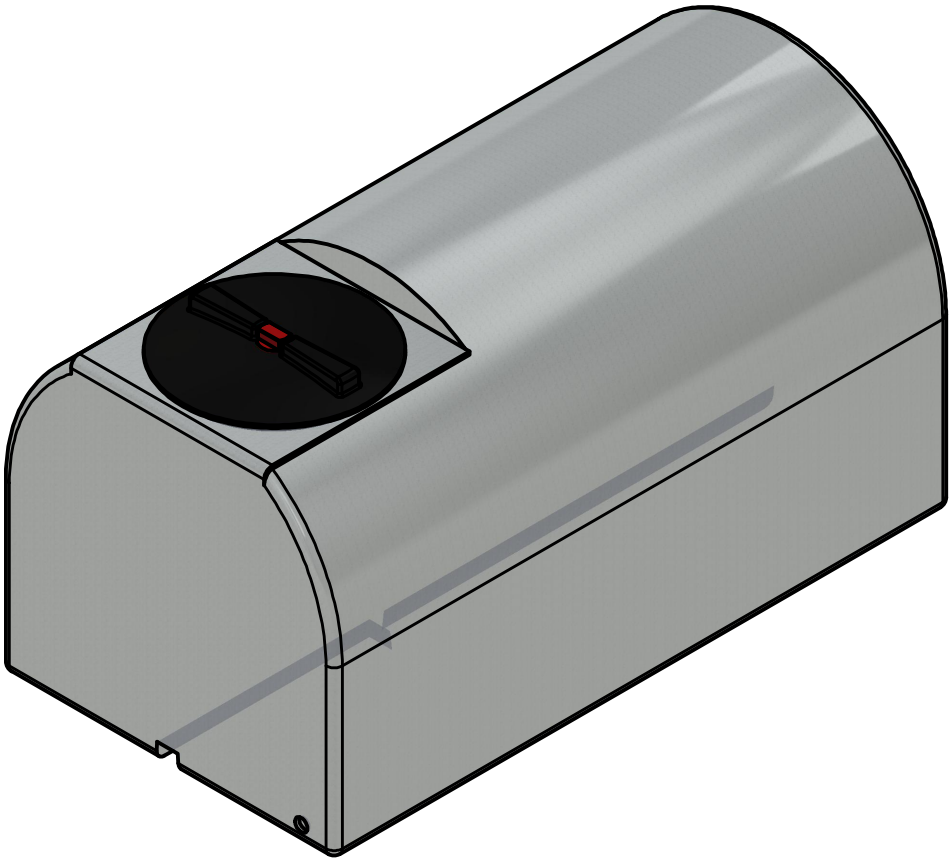
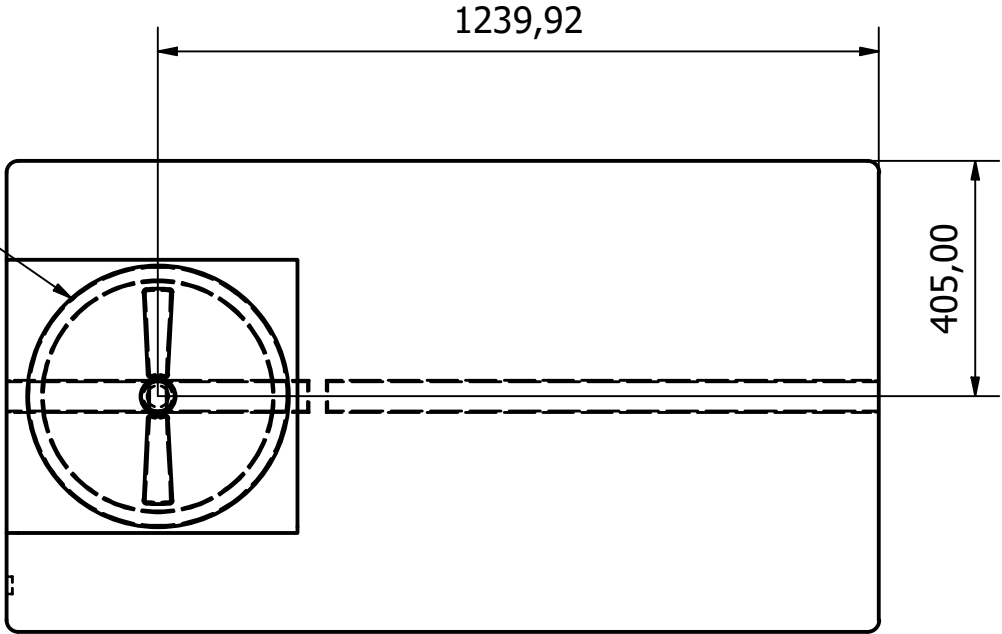


| | |
|-----------------------------|--------------|
| MATERIALS | Polyethylene |
| NOMINAL WEIGHT (kg) | 34 |
| TYPICAL WALL THICKNESS (mm) | 6.5 |

16" Vented Lid



ROTTERDAMPLASTICS

THIS DRAWING AND THE INFORMATION THEREON IS THE SOLE PROPERTY OF ROTTERDAM PLASTICS AND SHALL NOT BE COPIED OR REPRODUCED WITHOUT THE CONSENT OF ROTTERDAM PLASTICS.

DIMENSIONS ARE ALL IN MM UNLESS OTHERWISE STATED.
ALL TOLERANCES +/- 3% UNLESS STATED.

Rotterdam Plastics

PROJECT: 900 Litre Flat

DRAWN DATE:
14/03/2024

DESIGNED BY:
SAMM

CHECKED BY:

SHEET 1 OF 1

REV
A

DRAWING NO:

